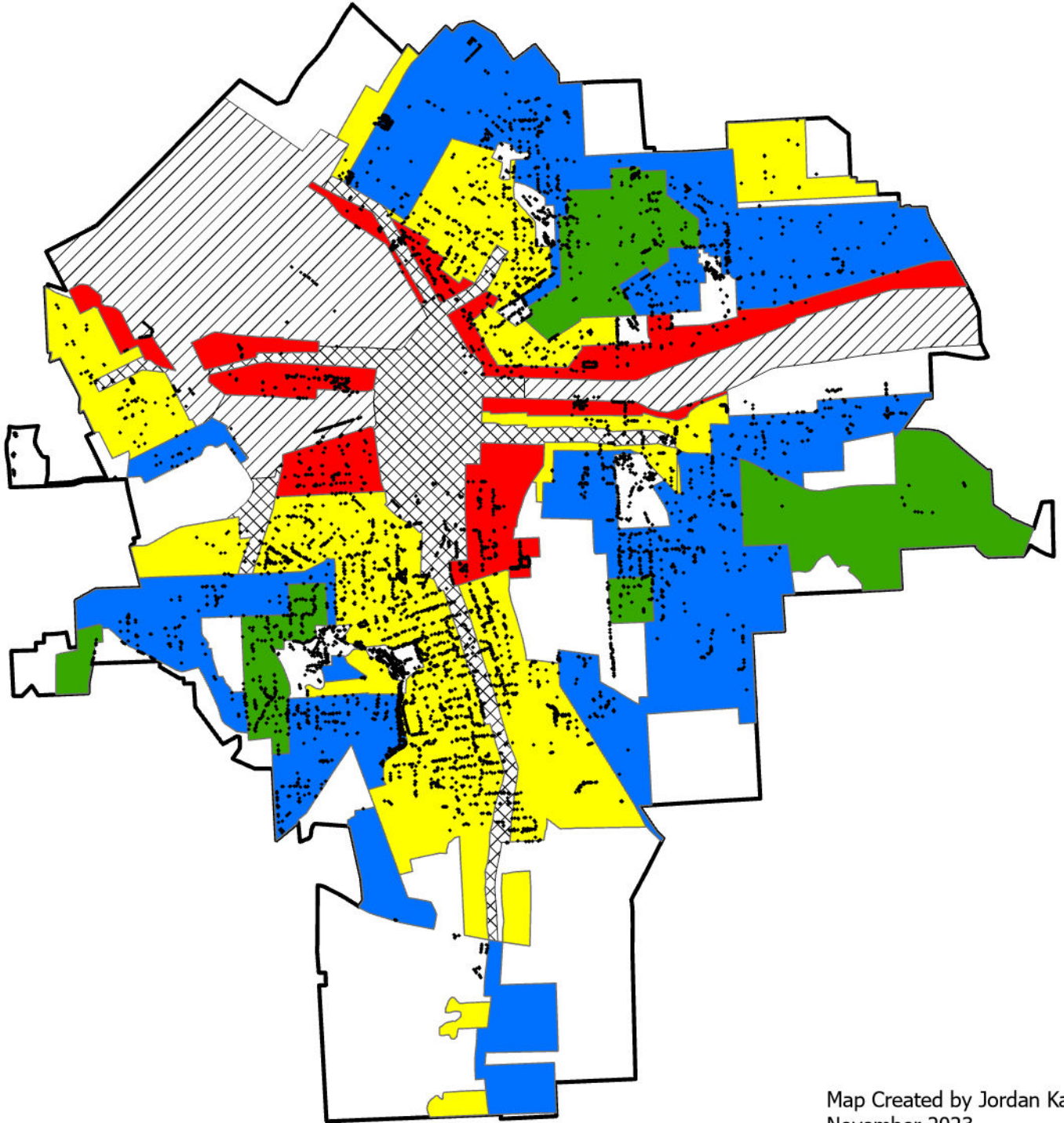


# Onondaga Earth Corps Tree Planting Sites and Syracuse Residential Security Map



Map Created by Jordan Kakuyo  
November 2023

## Residential Security Map

- OEC Planting Sites
- A First Grade (419 trees)
- B Second Grade (1592 trees)
- C Third Grade (2423 trees)
- D Fourth Grade (693 trees)
- Sparsely Built Up
- ▨ Industrial (142 trees)
- ▩ Commercial (349 trees)
- Undeveloped or Farmland (1272 trees)

Map displaying Onondaga Earth Corps (OEC's) tree planting sites and historically redlined areas in Syracuse. Redlining was a discriminatory practice prior to 1968, that worked to deny mortgage lending to residents based on race and ethnicity. Areas with a security grade A were labeled as the "best" neighborhoods, so residents were eligible to receive low interest loans. These were predominantly affluent white neighborhoods. While areas with a D grade were considered "hazardous" and residents living in these areas, who were mostly non-white, were ineligible to receive loans. These residential security areas are no longer used for mortgages lending, but the practice resulted in long term segregation that is still seen today. OEC's tree planting sites are represented by the black dots. Data on the tree planting sites was provided by OEC. The residential security map data was provided by Syracuse Community Geography.