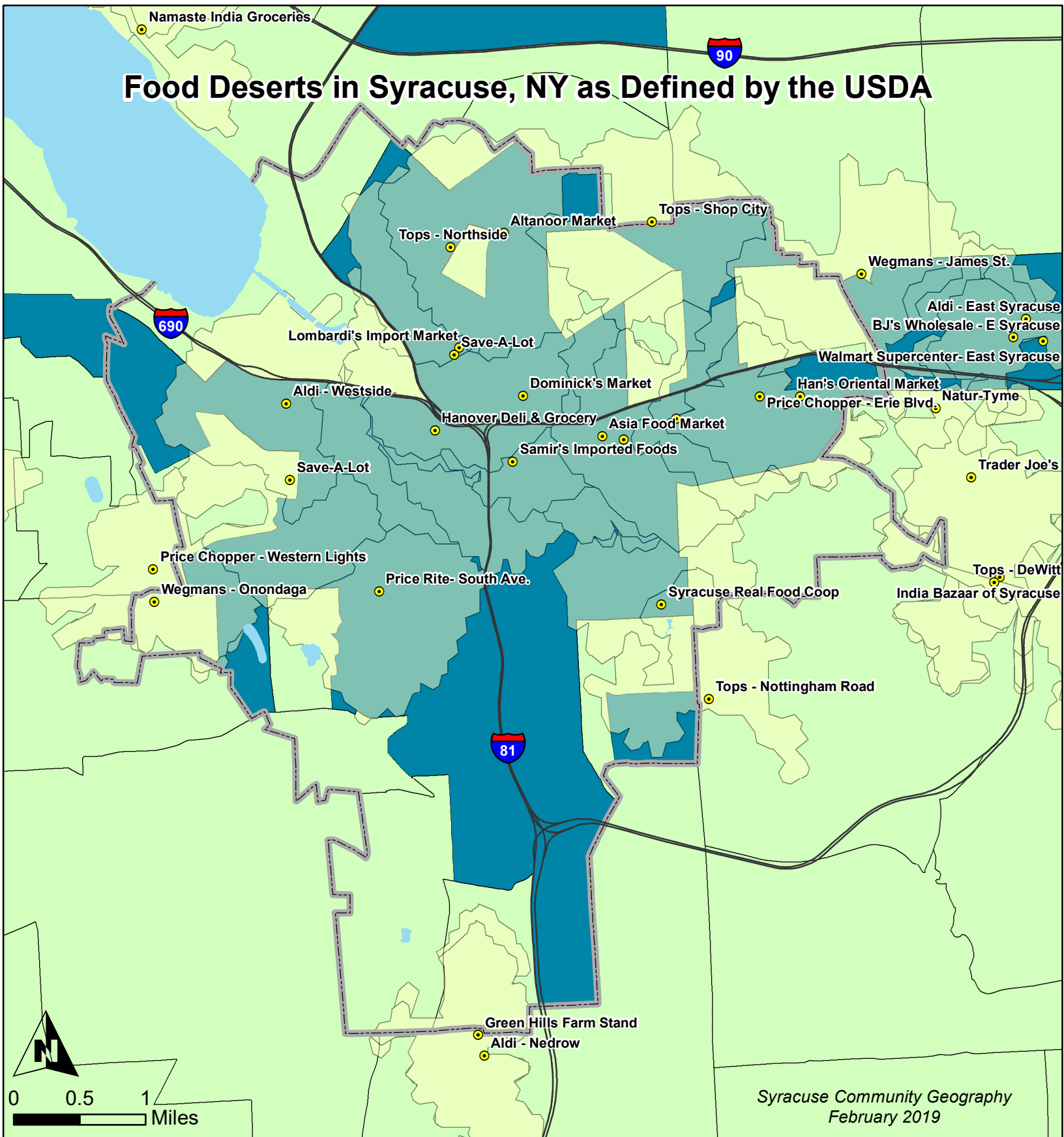


# Food Deserts in Syracuse, NY as Defined by the USDA



● Full Service Grocery Stores

▭ City of Syracuse

▭ 1-mile driving distance

**Percent in Poverty**

▭ 0% - 20%

▭ 20.1% - 82.9%

Census tracts qualify as food deserts if they meet low-income and low-access thresholds:

1. They qualify as "low-income communities", based on having: a) a poverty rate of 20 percent or greater, OR b) a median family income at or below 80 percent of the area median family income; AND
2. They qualify as "low-access communities", based on the determination that at least 500 persons and/or at least 33% of the census tract's population must reside more than one mile from a supermarket or large grocery store."