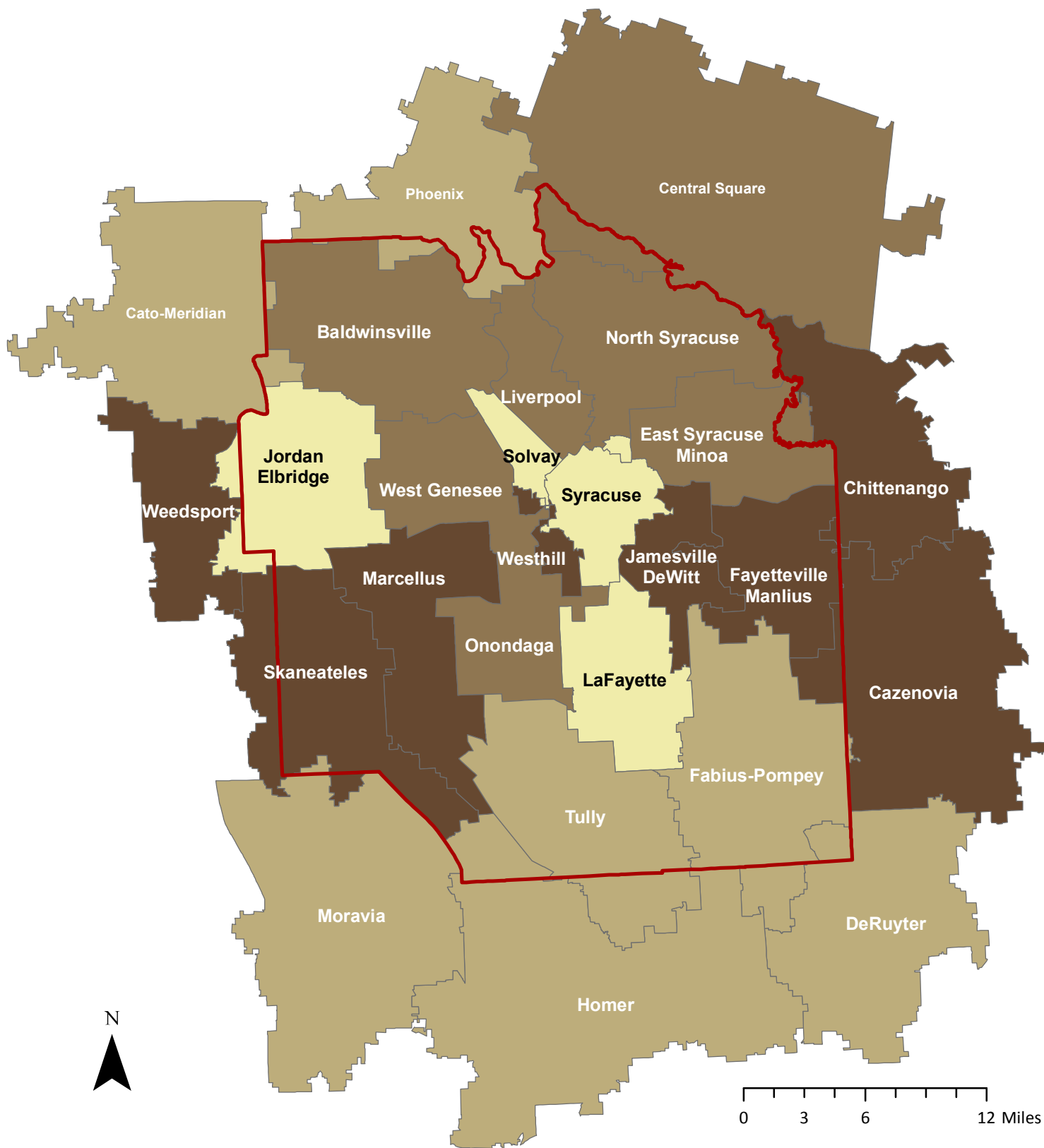


# Onondaga County School District English Language Arts Scores by School District (2013-2014)



### 2013-2014 School District Scores - 3rd Grade ELA

#### Percent Proficient

- 10% - 18%
- 19% - 23%
- 24% - 32%
- 33% - 59%

Onondaga County

The grades 3-8 English Language Arts (ELA) and Mathematics assessments measure the Common Core Learning Standards that were adopted by the State Board of Regents in 2010. Students that score 3 or 4 on the ELA tests (out of 4) are proficient.



**SYRACUSE  
COMMUNITY  
GEOGRAPHY**