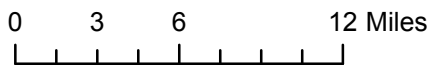
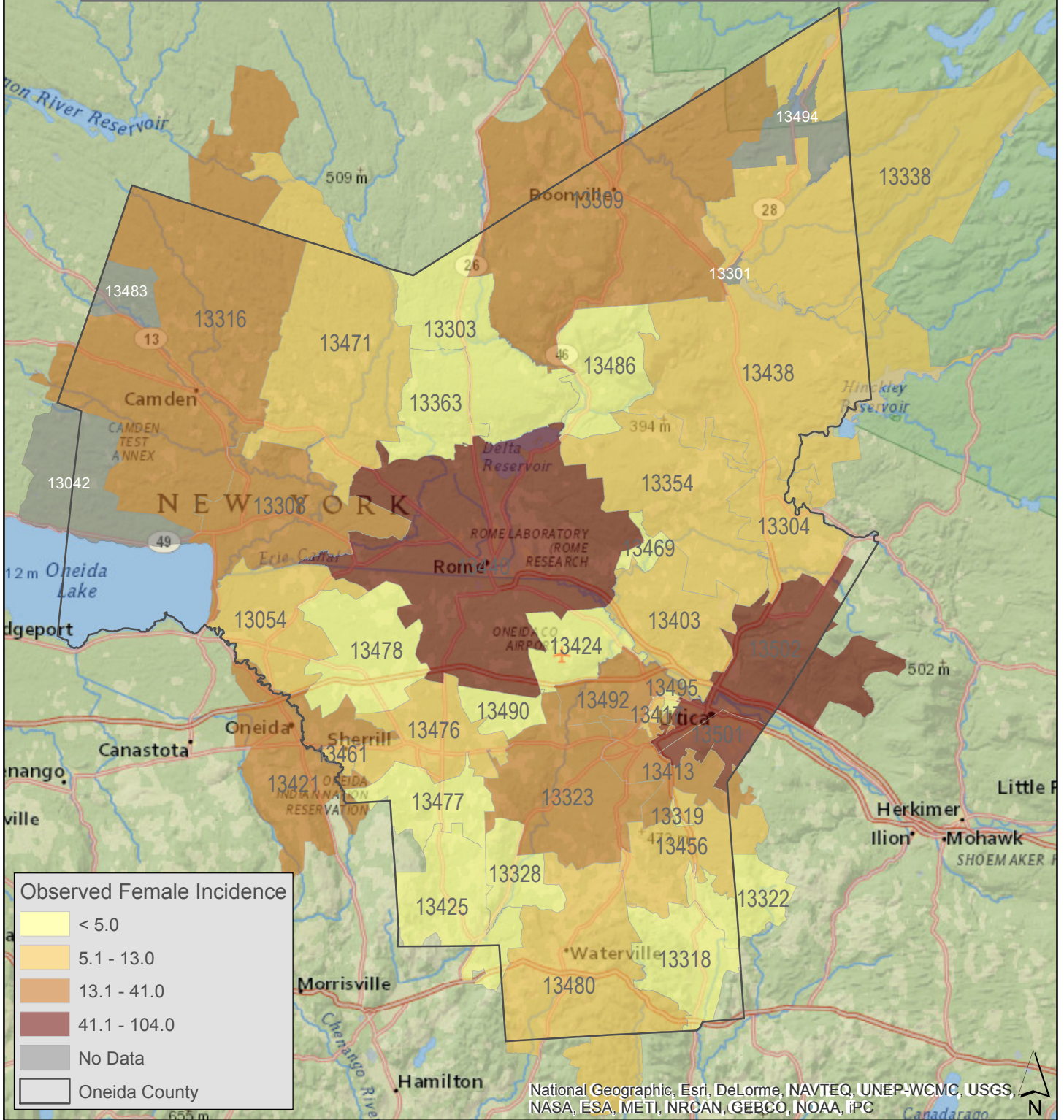


Female Lung and Bronchial Cancer Incidence by Zip Code, 2005-2009 Oneida County, NY



Zip Code 13440 (Greater Rome Area): 104 cases per 10,000
Zip Code 13501 (southeast of Utica): 103 cases per 10,000
Zip Code 13502 (northeast of Utica): 75 cases per 10,000

SYRACUSE COMMUNITY GEOGRAPHY
 Data Source: NYS Dept. of Health (2009)