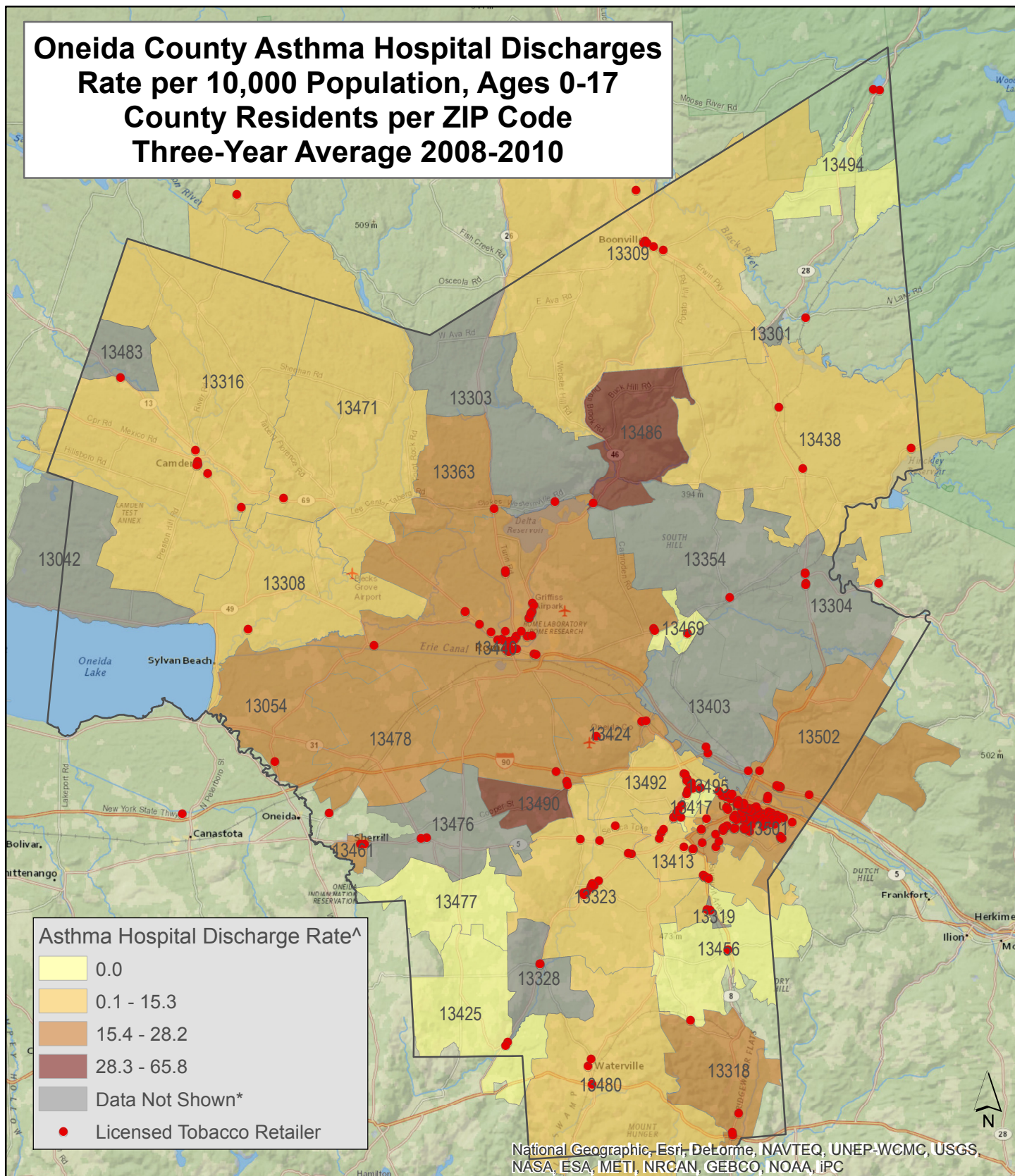


Oneida County Asthma Hospital Discharges Rate per 10,000 Population, Ages 0-17 County Residents per ZIP Code Three-Year Average 2008-2010



*Data is suppressed for confidentiality purposes if there are fewer than 3 discharges per ZIP code or if the average annual population in each ZIP code contains fewer than 33 people.

[^]All Oneida County ZIP Codes (except 13440, 13501, and 13502) have less than or equal to 10 hospital discharges, therefore the rate may not be stable (RSE>30%)

Data for a ZIP code that crosses county boundaries are allocated to the county that contains the largest geographic portion of that ZIP code).

0 3 6 12 Miles

ASTHMA HOSPITAL DISCHARGE RATES

Oneida County: 17.4

New York State: 28.8

New York State (Excl NYC): 15.9



Data Source: NYS Dept. of Health (2010)