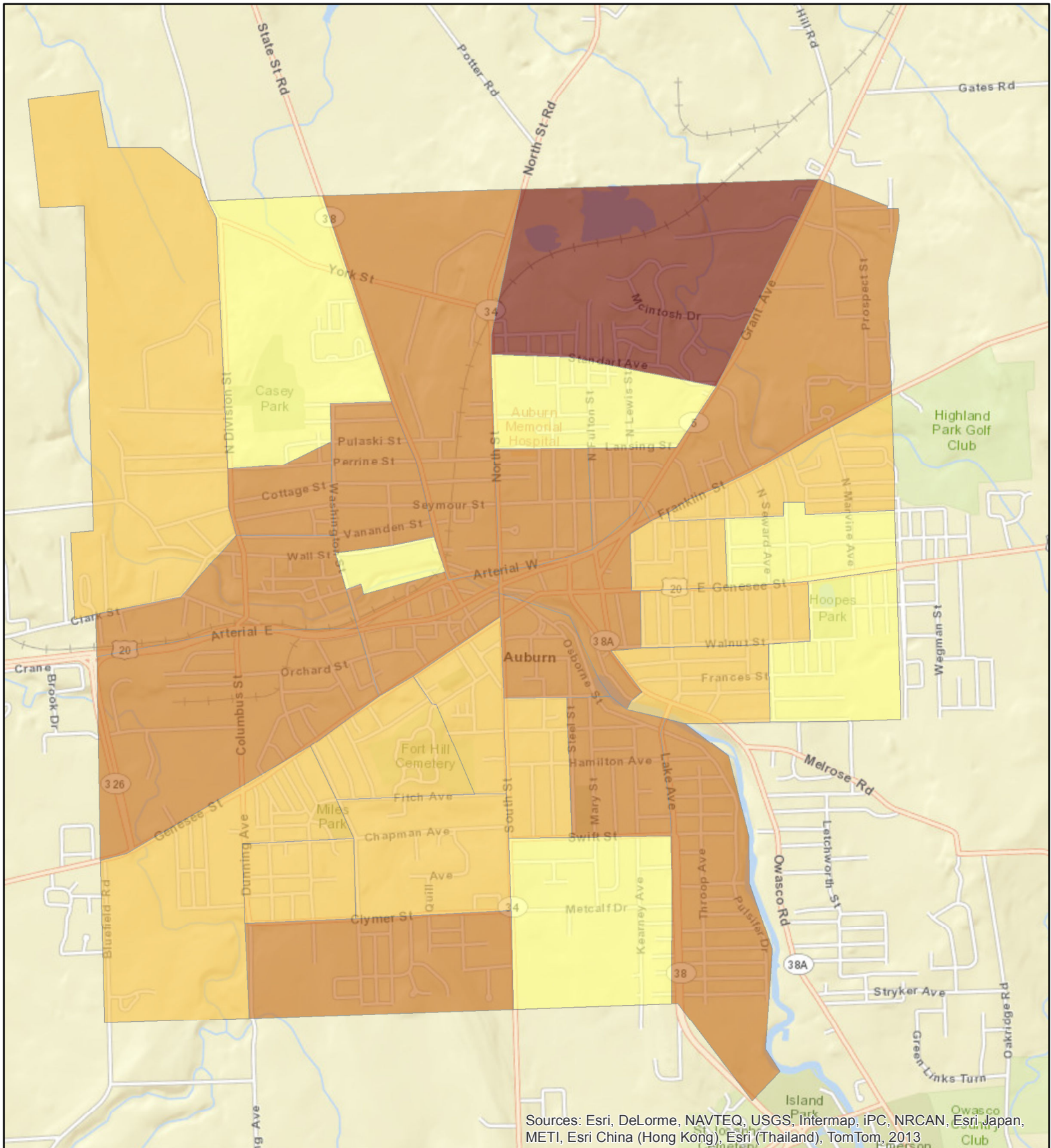


# Total Disabilities for the Civilian, Noninstitutionalized Population, Ages 5 and Above by Census Block Group (2000) in Auburn, NY



Sources: Esri, DeLorme, NAVTEQ, USGS, Intermap, iPC, NRCAN, Esri Japan, METI, Esri China (Hong Kong), Esri (Thailand), TomTom, 2013

## Total Population with a Disability

